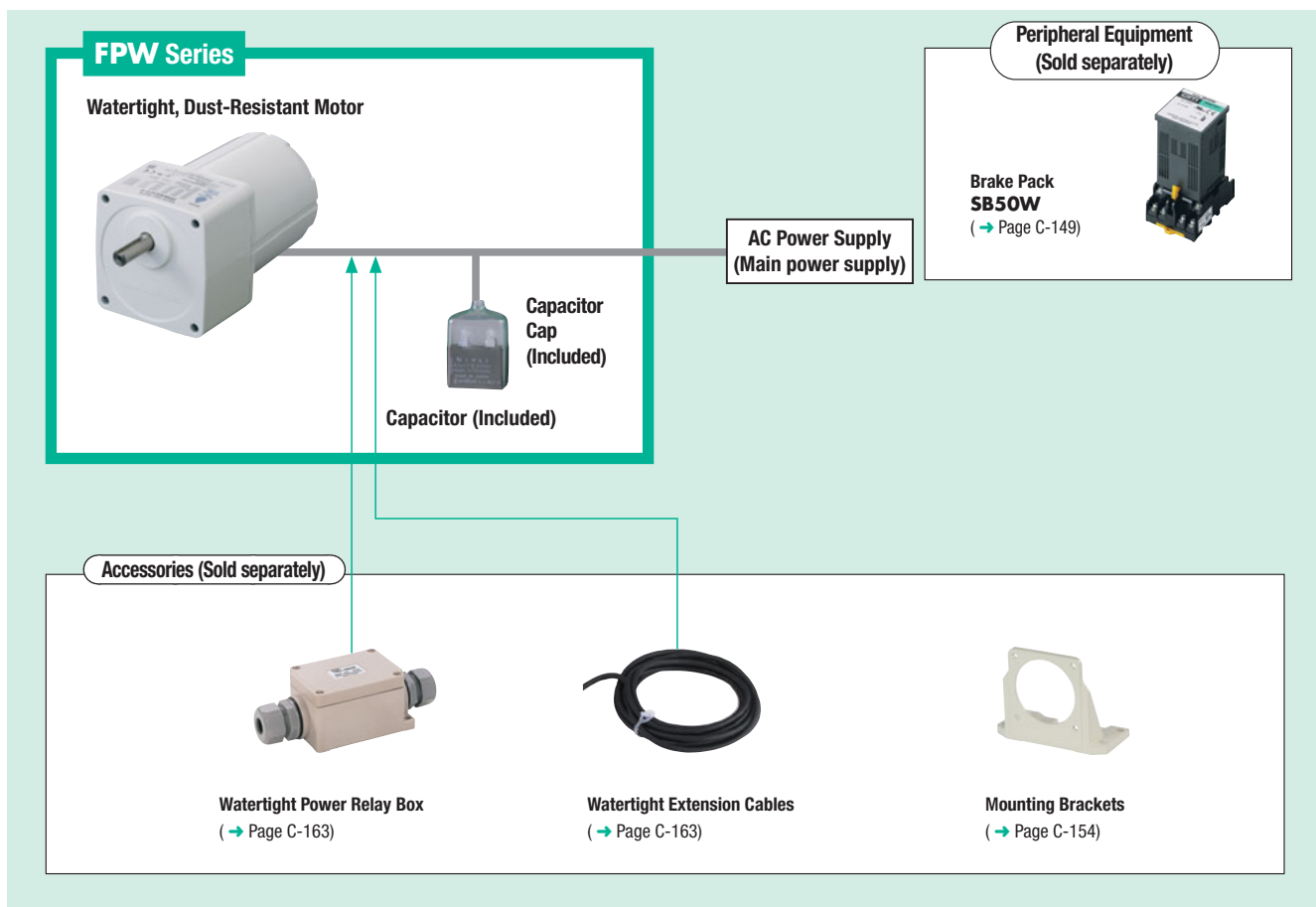


System Configuration



System Configuration Example

FPW Series Geared Motor	Sold Separately		
	Watertight Power Relay Box	Watertight Extension Cable (5 m)	Mounting Bracket
FPW425C2-25E €210.00	TB4-0608 €34.00	CC05AC43P €87.00	SOL4AP €35.00

- The system configuration shown above is an example. Other combinations are available.
- A capacitor is included with single-phase motors. The capacitors for the motors are neither watertight nor dust-resistant.

Product Number

FPW 4 25 C 2 - 15 E

① ② ③ ④ ⑤ ⑥ ⑦

①	Series Name	FPW: FPW Series
②	Motor Frame Size	4: 80 mm 5: 90 mm 6: 104 mm
③	Output Power (W)	(Example) 25: 25 W
④	Power Supply Voltage	C: Single-Phase 220/230 VAC S: Three-Phase 200/220/230 VAC
⑤	RoHS Directive-Compliant	2: RoHS Directive-Compliant
⑥	Gear Ratio	
⑦	Included Capacitor	E: Capacitor for Single-Phase 220/230 VAC

- The product name listed on the motor nameplate does not include the code **(E)** that indicates the type of capacitor. Certification regarding various safety standards is acquired for the product name on the motor nameplate, please visit www.orientalmotor.eu.
(Example) Product Name: **FPW425C2-15E**
→ Motor nameplate and product approved under various safety standards:
FPW425C2-15